



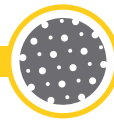
Our Latest Innovation

in Hernia Repair

SurgiMend[®] MP

Collagen Matrix for Soft Tissue Reconstruction

INTEGRA
LIMIT UNCERTAINTY



PERFORATIONS

SurgiMend® MP is a 2mm thick acellular collagen matrix featuring a macroporous design that facilitates fluid drainage. SurgiMend MP provides the strength and structural support for complex hernia repair.



Perforations in SurgiMend MP facilitate fluid drainage, playing an important role in hernia repair.



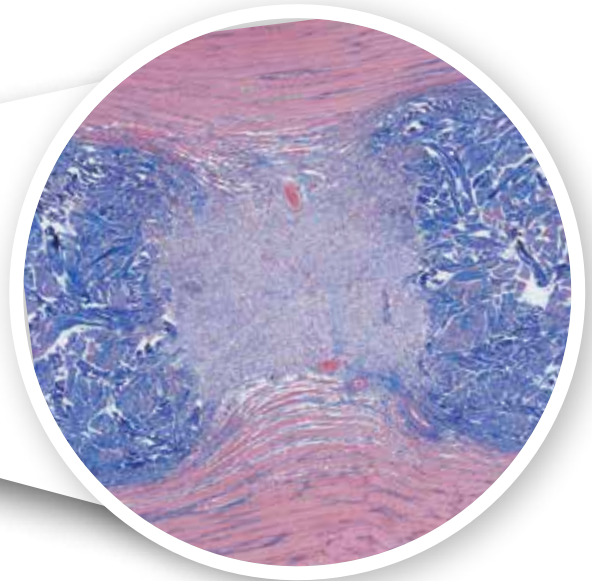
TISSUE INTEGRATION

Why settle for resorption or encapsulation when you can have tissue integration?



Perforations in SurgiMend MP allow for tissue revascularization and integration.¹

Image depicts cellular repopulation and revascularization in a small animal model, featuring a 2mm thick piece of SurgiMend with perforations.



Histological image of SurgiMend MP in a small animal intra-muscular implant model at 2 weeks.¹

Above is a trichrome stained histological section of perforated SurgiMend (dark blue) implanted in a muscle (red). The perforation is filled with cells, blood vessels, and newly deposited host collagen.

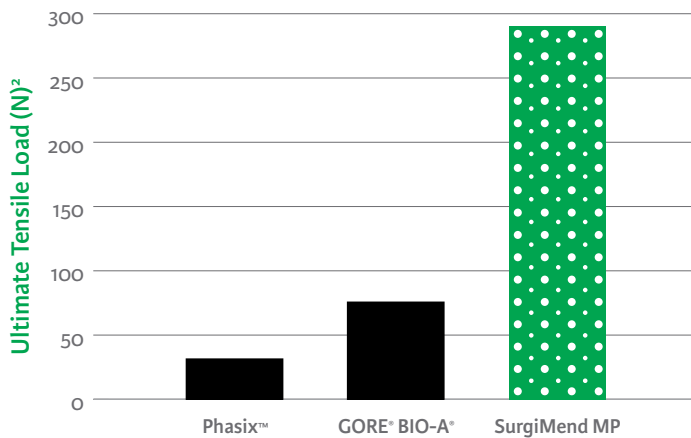




STRENGTH

Surgimend MP strikes the right balance of biologic properties and strength.

In tensile strength testing, SurgiMend MP has been shown to be more than **3X stronger** than Phasix™ and GORE® BIO-A® and is not made of synthetic polymers.²

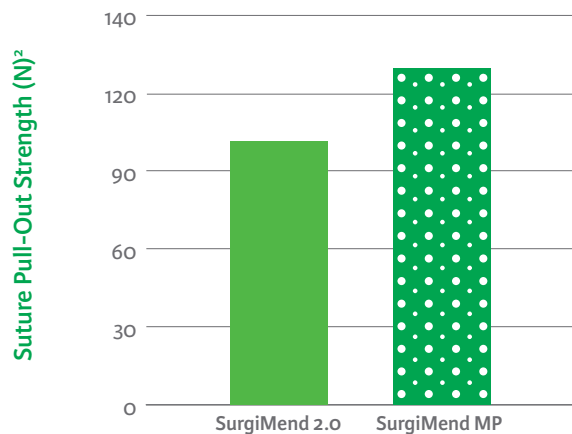


Tested via ASTM D638 Type IV dogbone, 13 mm in width

Even with numerous perforations, SurgiMend MP has comparable ultimate tensile strength to non-perforated porcine dermal matrices because of the inherent advantages in choosing bovine dermis as a source material.²

Surgimend MP

- ✓ Even greater suture pull out strength than non-perforated SurgiMend, when stitched through a hole at least 5mm from the edge.²





PRODUCT DETAILS

At-a-Glance

Composition	Native, bovine dermal tissue
Collagen source	Bovine dermis
Appearance	Flat, perforated, dry sheet of uniform thickness and color
Thickness	2 mm*
Storage	Room temperature storage
Chemical crosslinkers	None
Rehydration	Approximately 60 seconds in room temperature saline [^]
Intraoperative handling	Can be trimmed to size (wet or dry) and placed in any orientation, with either side up
Viral safety	Manufacturing process includes validated viral-inactivation steps
Transmissible Spongiform Encephalopathy (TSE) Safety	TSE safety certification by European Directorate for the Quality of Medicines; source tissue selected and processed in accordance with strict US and International regulatory requirements
Sterilization	Via exposure to ethylene oxide gas; sterility assurance level of 10 ⁻⁶ with undetectable ethylene oxide residuals

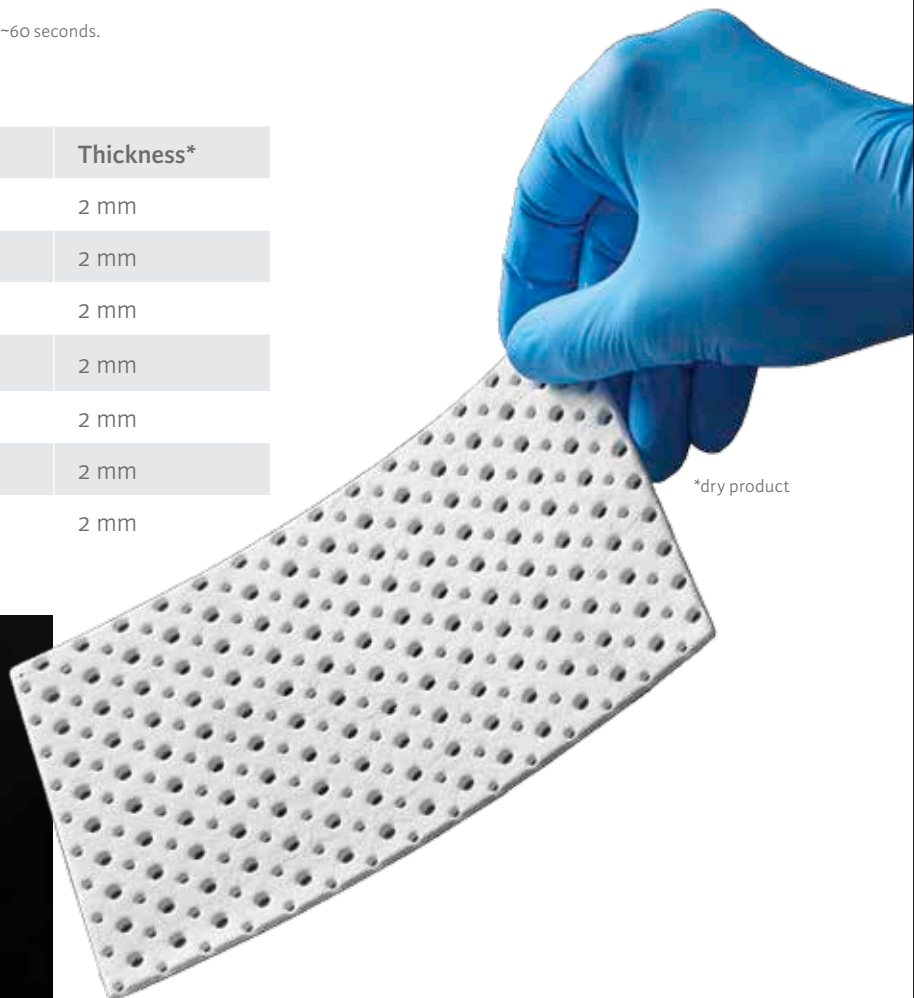
*Nominal

[^]SurgiMend MP is specified to hydrate in ≤ 3 minutes; typically, it hydrates in ~60 seconds.

Ordering Information

Reference	Description	Thickness*
606-206-001	10 cm x 15 cm perforated	2 mm
606-206-004	16 cm x 20 cm perforated	2 mm
606-206-003	13 cm x 25 cm perforated	2 mm
606-206-002	20 cm x 20 cm perforated	2 mm
606-206-005	20 cm x 25 cm perforated	2 mm
606-206-006	20 cm x 30 cm perforated	2 mm
606-206-007	25 cm x 40 cm perforated	2 mm

*Nominal



Indications

SurgiMend is intended for implantation to reinforce soft tissue where weakness exists and for surgical repair of damaged or ruptured soft tissue membranes.

SurgiMend is specifically indicated for:

- Plastic and reconstructive surgery
- Muscle flap reinforcement
- Hernia repair including abdominal, inguinal, femoral, diaphragmatic, scrotal, umbilical, and incisional hernias

Contraindications

SurgiMend should not be used for patients with a known history of hypersensitivity to collagen or bovine products.

Warnings and Precautions

CAUTION: Federal (USA) law restricts this device to sale by or on the order of a licensed healthcare practitioner.

- Fluid flows through the fenestrated and perforated product faster than through solid product.
- Meshing of fenestrated or perforated product is not recommended.
- Do not expose to chemicals or substances other than sterile, room temperature 0.9% saline.
- Excessive heat can damage collagen. Do not hydrate in 0.9% saline warmed above room temperature. If, when hydrated, the product shrinks in size, DO NOT use the product as it may be damaged.
- SurgiMend should be used with caution in regions where infection exists or is suspected.
- Treat any existing infection appropriately. If used in contaminated or infected wounds, collagen-based implants can weaken or break down.
- SurgiMend should be used with caution in surgical locations where the product may be exposed to stomach and/or intestinal contents. Collagen-based implants can be susceptible to degradation by digestive enzymes and conditions of acidic (low) pH.
- SurgiMend is for single patient use only; do not resterilize as this may damage SurgiMend.
- SurgiMend has not been evaluated for use in pregnant women.
- The patient's medical condition may adversely impact healing of the deficient tissue. These conditions may include, but are not limited to: smoking, diabetes, insufficient blood supply at the implant site, and exposure of the implant site to radiotherapy.

References

1. Data on file, Internal testing PDR 198
2. Data on file, internal testing PDR 231

Availability of these products might vary from a given country or region to another, as a result of specific local regulatory approval or clearance requirements for sale in such country or region.

- Non contractual document. The manufacturer reserves the right, without prior notice, to modify the products in order to improve their quality.
- Warning: Applicable laws restrict these products to sale by or on the order of a physician.
- Consult product labels and inserts for any indication, contraindications, hazards, warnings, precautions, and instructions for use.

For more information or to place an order, please contact:

USA 877-444-1122 i 866-800-7742 fax
International +1 617-268-1616 i + 1 617-268-3282 fax
surgimendsales@integralife.com

