

From relative location to absolute destination SURGICAL NAVIGATION

The EnVisio™ System
When getting to the precise location matters — **distance, depth & direction** guidance delivers your surgical tool to the target.



What is the EnVisio™ Navigation System ?

- A surgical navigation system that provides the surgeon a **PRECISE PATHWAY** to the defined specimen Radiology has placed the SmartClip™(s).
- The ability to refine surgical approach through **LIVE NAVIGATION** and target assessment in-situ.
- Increased volume of navigation >20cm to address a greater patient population.
- Differentiated SmartClip™(s) for complex lesions or multiple localizations.

Why surgical navigation ?

- Differentiated from a Point-to-Point Wire-Free solution, surgical navigation offers surgeons a wireless solution across multiple specialties to pinpoint a specific target for care. EnVisio™ Surgical Navigation offers navigation in non-anatomical tissue to a specific target for excision.
- The goal in Breast-Conserving surgery is to excise all detectable cancer cells with negative margins while sparing healthy tissue. EnVisio™ Surgical Navigation provides surgeons with tools to reach a precise location (radiology detected suspicious cells) to defined specimen for the best patient outcomes.



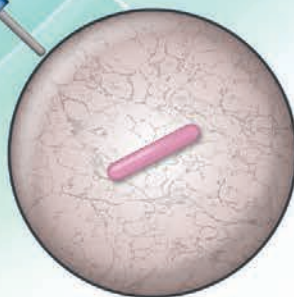
EnVisio™ Real-Time Surgical Navigation.

Bring the Power of Precision to your Breast Care Program.

NEW! NavSlim™

Ergonomically sized to a slim 5.21" length

- NavSlim™ allows surgeons to integrate multi-dimensional navigation to a broader range of electro-surgical tools and introduce 10cm tips for deep, complex excisions.
- NavSlim™ allows you to use electrocautery tools with or without a smoke evac.
- Just like the Nav Pencil, the NavSlim™ brings you the Power of Precision as you operate – providing Depth, Direction, and Distance in Real-Time from the tip to the SmartClip.™
- The compact size of NavSlim™ balances surgeon line of sight and surgical navigation for specimen assessment in-situ.



< Scan to book a virtual EnVisio™ Demo

INNOVATION:
Scan to register to give us feedback on Tumor Track™ >



Elucent Medical
7480 Flying Cloud Drive
Eden Prairie, MN 55344

(844) 417-1700
www.elucent.com